

## Downloading Real Player for Mac OS X.

[www.real.com/mac/realplayer](http://www.real.com/mac/realplayer)

[http://www.apple.com/downloads/macosx/internet\\_utilities/realplayer.html](http://www.apple.com/downloads/macosx/internet_utilities/realplayer.html)

**This is a step-by-step guide to downloading Real Player for your Mac OS X to enable you to view the video content on FireTV.**

### **Step 1:**

Click on the link to begin the Real Player download process.

Click on the location nearest to you.

HOST	LOCATION	CONTINENT	DOWNLOAD
	Seattle, WA, USA	North America	
	Seattle, WA, USA	North America	
	Seattle, WA, USA	North America	
	Dresden, Germany	Europe	
	London, United Kingdom	Europe	
	Tokyo, Japan	Asia	

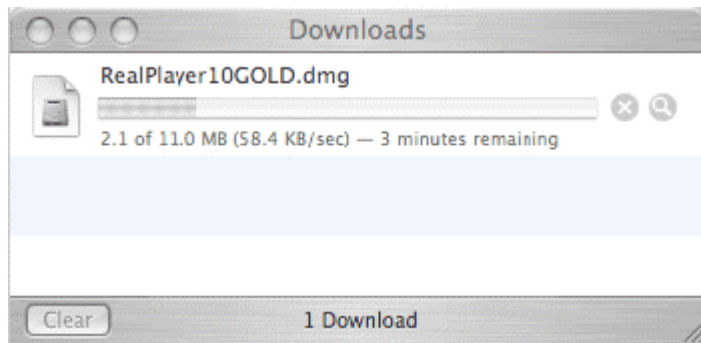
### **Step 2:**

This pop-up window will appear once the link is clicked. Click on the link to download the file



### **Step 3:**

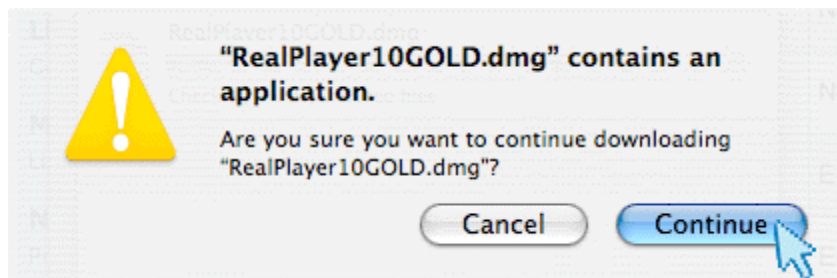
Real Player starts to download onto your computer. If you can't see this window, select the 'Tools' menu from your Internet toolbar and click 'Downloads' or press keyboard shortcut 'Command-J'.



The amount of time this download takes will depend on your internet connection speed.

**Step 4:**

A pop-up will appear warning you that you are downloading an application. Click 'Continue' to carry on downloading Real Player.



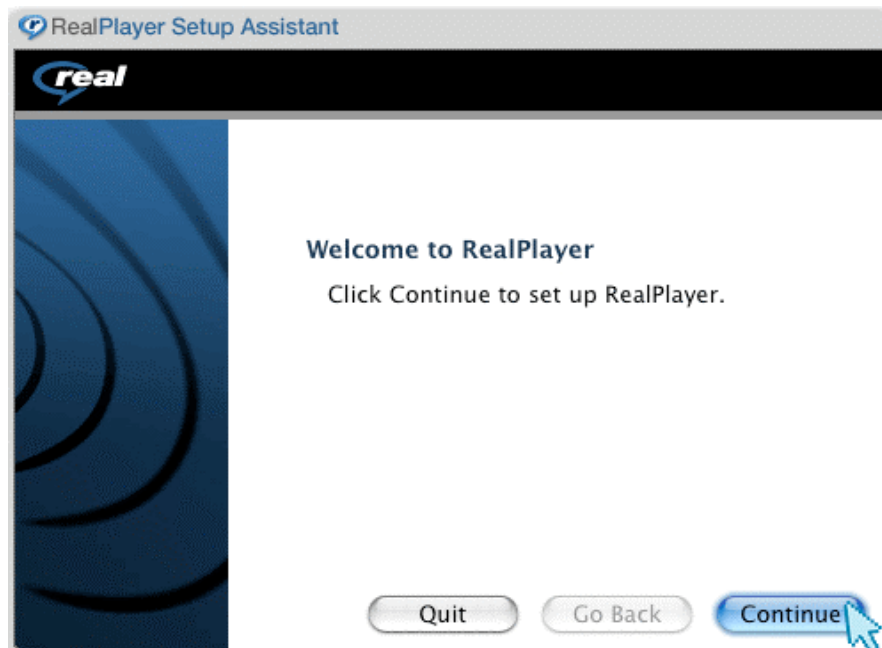
**Step 5:**

When the download is complete, the Real Player application icon appears on your desktop. Double-click the icon to launch the 'Set-up Assistant' window.



**Step 6:**

Click 'Continue' to proceed

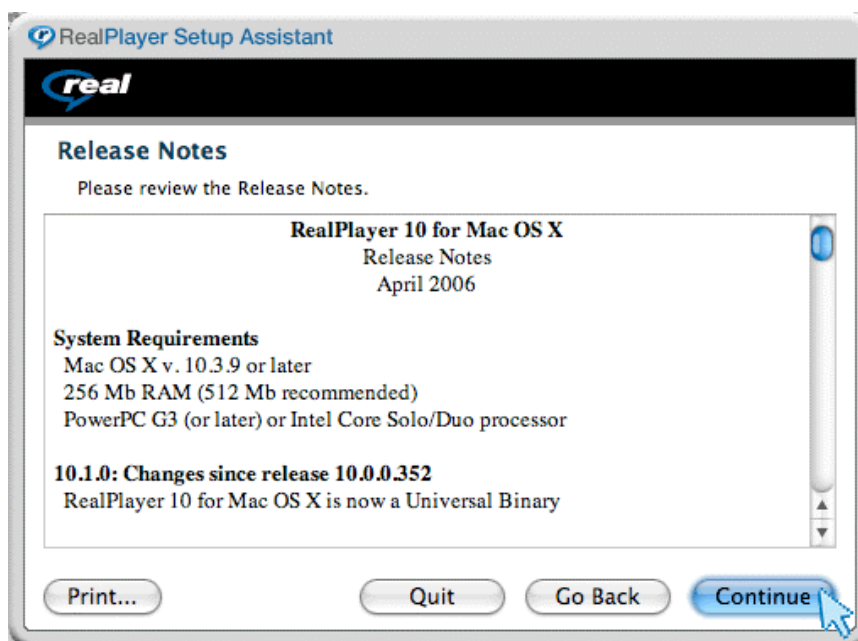


**Step 7:**

The next window that appears requires that you check the Mac OS you are currently running to ensure it meets the listed requirements.

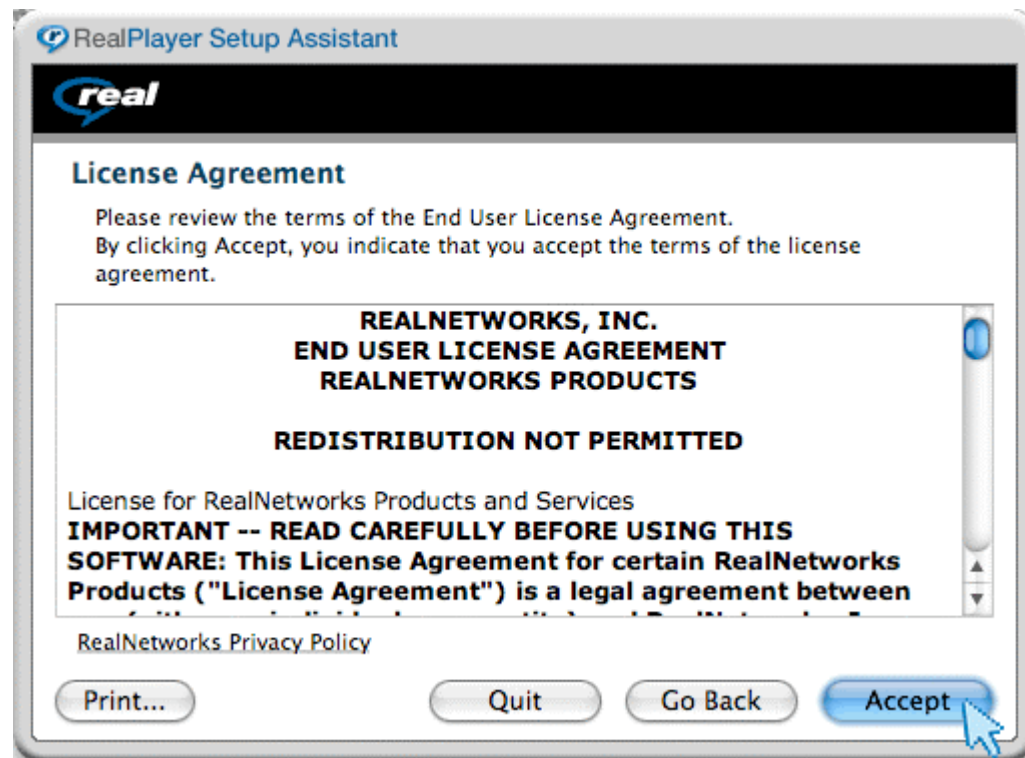
If you find that you need to update your OS X version, open your System Preferences panel and double click 'Software Update' to update your OS.

Click 'Continue'.



**Step 8:**

Read through the licence agreement and click 'Accept' to continue.



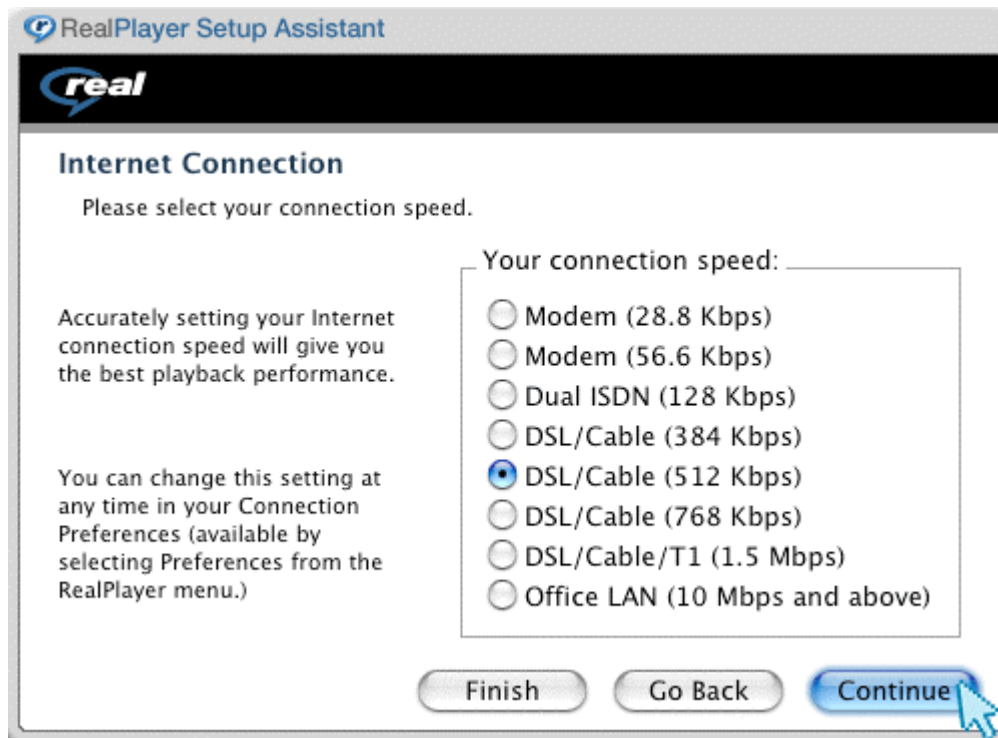
**Step 9:**

This next window asks you to choose the speed of your internet connection.

All video content on FireTV has been designed to play at the minimum dial-up speed to ensure all visitors can view the footage.

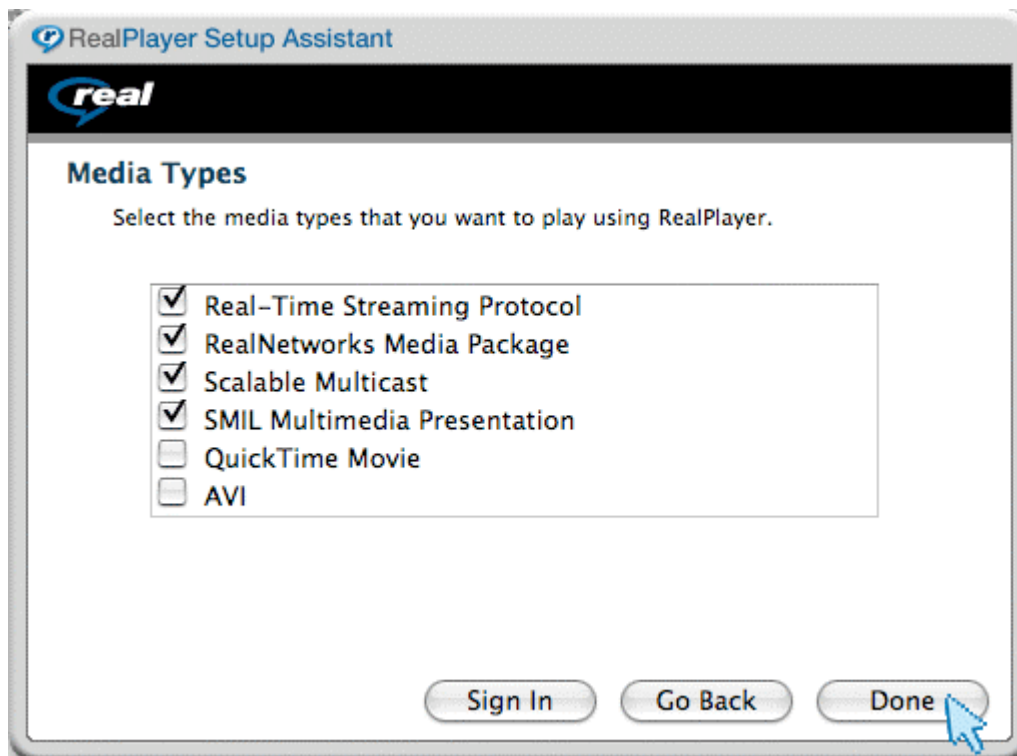
If you are unsure what your internet connection speed is just select the 'Modem (56.6 Kpbs)' if you have a dial-up connection or select 'DSL/Cable (512 Kbps)' if you have a Broadband connection.

Click 'Next' to continue.



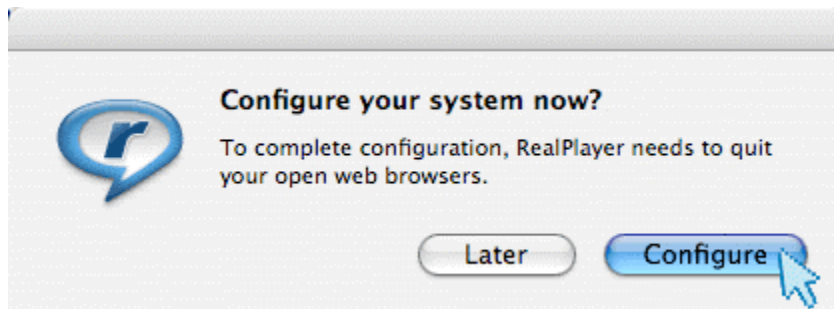
**Step 10:**

In this 'Media Types' window you can now choose which media files will be played by RealPlayer. Just leave all four boxes checked if you are unsure. Click 'Done' to continue the installation.



**Step 11:**

The 'Configure your System' window will now appear. Click 'Continue' to carry out the configuration. Please note: All open browser windows will automatically close as this process completes.

**Step 12:**

Once the Configuration has completed your new Real Player has successfully installed and will start and appear on screen. You can now close Real Player, as once the program is installed, FireTV doesn't require Real Player to be running in order to view the video content on the site.



You can now navigate back to FireTV to view all the video content.

**Happy surfing!**